

Section 2

An Analysis and Discussion of Economic Activity within the District

The East Tennessee Development District (ETDD) is comprised of sixteen counties with vastly different economic characteristics and fiscal profiles. Though the demographic makeup of each county (as profiled in Section 1) and its specific geography may be leading causes for each county's individual economic situation and may partially explain the diversity that exists amongst the counties within ETDD, the economic situation of a particular county can have profound impact on their solid waste system, affecting the level of service available to their residents and their ability to properly manage the solid waste material stream generated within their boundaries. However, all sixteen counties of ETDD provide an adequate level of service to their residents through options for collection location and diversity of materials collected for recycling, with Hamblen County and thirty-five municipalities providing curbside collection of Class I waste and all sixteen counties providing sufficient convenience center locations to service their residents. Section 5 provides a more detailed discussion of the solid waste collection and recycling services in each county. For the purposes of developing an economic profile of ETDD, this report will examine state/local sales tax collected, unemployment rate, per capita personal income, and total housing units for all sixteen counties for the past decade and with future projections.

State and local sales tax revenue, detailed for FY2009-FY2018 in Table 2-A and Charts 2-A and 2-B below, is a strong indicator for how much waste is generated in a solid waste region. Generally, as sales tax revenue increases, the amount of waste generated is affected, i.e. higher levels of consumerism are correlated with higher waste generation. However, a decrease in sales tax revenue does not necessarily correlate with a decrease in waste generated because consumers may be purchasing products that cost less but utilize the same amount of packaging. The beginning of the past decade reflects a snapshot of the greater economic difficulties plaguing the entire nation during the peak of the Great Recession, with a decrease in sales tax collected from FY 2009 to FY2010 in all counties except Grainger and Union, with 1% and 5% growth respectively. The next year saw increases in collected sales tax for all but three of the counties of ETDD, and by mid-decade, all counties experienced fairly stable growth in collected sales tax. From FY2009-FY2018, the ETDD region as a whole experienced an average growth in collected sales tax of 2.7%. This relatively modest level of growth allowed the counties of ETDD to easily handle the amount of waste generated from the sale of goods within their boundaries. Utilizing an average level of growth in collected tax across the past decade for each county, ETDD staff project the state/local sales tax collected for FY2019-FY2028 in Table 2-B and Charts 2-C and 2-D below. Analysis of this particular economic indicator does not indicate that any county of ETDD will be unable to manage the waste generated within their boundaries over the next decade utilizing the same infrastructure that worked well over the past decade.

Furthermore, the unemployment rate correlates with the spending ability of a county's residents, which affects the amount of goods consumed. Table 2-C and Chart 2-E below detail the unemployment rate for each of the sixteen counties of ETDD from 2009-2018. The years 2009-2011 saw fairly high unemployment rates across the

district, with Scott and Monroe Counties at district-wide highs in 2009 of 18.3% and 17.5% unemployment respectively. The years 2012-2015 saw all counties making sizable reductions in their unemployment rates, and by 2018, all counties were below 5% unemployment, with Knox County at the district low of 2.9%. Utilizing an average of percent change in unemployment rate each year across the past decade for each county, ETDD staff project the unemployment rate for the years 2019-2022 in Table 2-D and Chart 2-F below. Future populations with higher rates of employment will have higher rates of consumption and thereby higher rates of waste, but as discussed above, the solid waste infrastructure currently in place for collection, processing, and disposal that ably handled the waste stream over the past decade will easily handle the waste stream affected by projected unemployment rates.

Moreover, per capita personal income (PCI), or the average income earned per person, can be a useful indicator of the amount of waste that can be generated in a place. Higher levels of PCI are generally correlated with higher levels of waste generation, with higher income leading to higher consumption, which leads to increased waste output. From 2008 through 2017, the ETDD region as a whole saw an increase in per capita personal income (PCI) of 27.02%. The years 2008-2010, as discussed above, were marked by high unemployment across the ETDD region, and PCI varied widely across the district as a result, in 2009 ranging from a low of \$22,404 in Union County to a high of \$37,811 in Knox County. By 2017, as the overall state and national economies improved, so too did the counties of ETDD, and PCI increased across the region, with a low of \$28,699 in Morgan County and a high of \$48,160 in Knox County. The PCI of the counties of ETDD for the years 2008-2017 are detailed in Table 2-E and Chart 2-G below. Utilizing the growth between years to create an average percent increase for each county, ETDD staff projects the PCI for all counties of the ETDD region in Table 2-E and Chart 2-H below. Just as each county had the necessary solid waste infrastructure in place to handle the waste generated within their boundaries from the years 2008-2017, the waste generated as a result of the projected PCI for each county will not be enough to overburden the existing infrastructure.

Additionally, the total number of housing units is indicative of the population an area can sustain, and growth in numbers of housing units correlates with population growth, which also is correlated with increased waste generation. Both increases and decreases in the total number of housing units affect the amount of Class III waste generated in a place, as new construction and demolition activities generate construction and demolition debris that must be managed. The total numbers of housing units for all counties of the ETDD region from 2010-2018 are detailed in Table 2-F and Charts 2-I and 2-J below. From 2010-2018, the region as a whole saw a 4.13% increase in the number of housing units, increasing from 551,085 in 2010 to 573,843 in 2018. The growth rates varied across counties, from a low of 0.90% in Anderson County to a high of 7.44% in Loudon County. Only Roane County saw an overall loss of housing units with a growth rate of -0.54%. However, the solid waste infrastructure in place ably handled the waste generated, with ten Class III landfills located across the region to

handle the construction and demolition waste. Loudon County, which saw the greatest increase in housing units, is home to Tennessee Waste Movers, Inc. Demolition Landfill, where both current and projected construction and demolition debris can be disposed. Utilizing an average of percent change in the total number of housing units each year across the past decade for each county, ETDD staff project the number of housing units for the years 2019-2029 in Table 2-G and Charts 2-K and 2-L below. The district as a whole is projected to grow to 932,721 housing units by 2029, matching the pace of the projected population growth discussed in Section 1. The currently-used solid waste infrastructure that collects and processes the waste across the district, including the nine Class I and ten Class III landfills within the district, will ably handle the projected waste generated through the next decade.

Table 2-A
State/Local Sales Tax Collected 2009-2018

County	FY 2009	FY 2010	FY 2011	FY 2012	FY 2013	FY 2014	FY 2015	FY 2016	FY 2017	FY 2018
Anderson	\$ 86,527,369	\$ 86,429,184	\$ 87,462,450	\$ 89,266,854	\$ 86,624,798	\$ 88,251,745	\$ 91,175,352	\$ 96,451,847	\$ 101,343,370	\$ 109,852,627
Blount	\$ 129,585,026	\$ 122,999,850	\$ 128,310,630	\$ 141,108,427	\$ 140,796,608	\$ 149,067,132	\$ 160,495,127	\$ 171,379,671	\$ 178,238,945	\$ 183,512,071
Campbell	\$ 25,970,000	\$ 25,279,554	\$ 25,456,660	\$ 26,853,218	\$ 27,469,197	\$ 27,150,947	\$ 28,892,063	\$ 30,990,000	\$ 31,788,734	\$ 33,094,303
Claiborne	\$ 13,997,514	\$ 13,824,170	\$ 13,588,804	\$ 14,461,409	\$ 14,397,028	\$ 14,641,879	\$ 15,770,039	\$ 16,464,590	\$ 16,340,503	\$ 17,264,417
Cocke	\$ 26,877,600	\$ 26,654,590	\$ 27,038,213	\$ 28,690,755	\$ 28,508,507	\$ 29,404,402	\$ 30,373,982	\$ 31,654,481	\$ 31,918,942	\$ 32,039,891
Grainger	\$ 6,001,938	\$ 6,045,683	\$ 6,040,425	\$ 6,497,700	\$ 6,343,511	\$ 6,596,693	\$ 6,983,675	\$ 8,133,860	\$ 8,566,321	\$ 8,532,268
Hamblen	\$ 75,630,336	\$ 72,596,631	\$ 75,922,125	\$ 83,370,554	\$ 82,636,066	\$ 84,443,348	\$ 87,385,286	\$ 90,070,941	\$ 93,808,842	\$ 94,878,671
Jefferson	\$ 31,383,275	\$ 31,122,569	\$ 33,121,891	\$ 35,622,397	\$ 34,489,875	\$ 36,421,204	\$ 38,271,305	\$ 40,619,435	\$ 42,958,948	\$ 42,985,766
Knox	\$ 653,864,197	\$ 630,100,948	\$ 657,997,858	\$ 725,256,932	\$ 715,034,150	\$ 720,725,107	\$ 760,655,405	\$ 807,865,045	\$ 822,338,022	\$ 844,110,844
Loudon	\$ 40,301,591	\$ 39,523,788	\$ 42,411,147	\$ 46,667,115	\$ 45,941,339	\$ 47,601,518	\$ 49,478,401	\$ 52,814,174	\$ 55,935,189	\$ 56,903,912
Monroe	\$ 30,437,436	\$ 30,005,755	\$ 30,092,939	\$ 32,529,725	\$ 32,483,647	\$ 34,786,571	\$ 36,148,135	\$ 38,428,275	\$ 38,628,434	\$ 39,145,708
Morgan	\$ 4,930,911	\$ 4,680,014	\$ 4,921,867	\$ 4,942,539	\$ 4,832,225	\$ 5,048,844	\$ 5,181,077	\$ 5,103,114	\$ 5,407,988	\$ 5,740,319
Roane	\$ 61,646,763	\$ 57,348,723	\$ 60,916,334	\$ 63,809,236	\$ 58,253,770	\$ 60,277,654	\$ 53,399,749	\$ 59,246,588	\$ 61,291,597	\$ 56,208,658
Scott	\$ 12,936,129	\$ 12,713,342	\$ 12,770,038	\$ 13,037,845	\$ 12,850,211	\$ 13,097,345	\$ 13,570,683	\$ 14,677,247	\$ 14,929,701	\$ 14,359,795
Sevier	\$ 236,975,609	\$ 233,082,476	\$ 243,273,593	\$ 257,354,665	\$ 267,387,533	\$ 278,931,224	\$ 298,482,746	\$ 331,000,213	\$ 342,319,431	\$ 355,558,065
Union	\$ 5,993,662	\$ 6,299,044	\$ 6,202,300	\$ 6,566,323	\$ 6,020,532	\$ 6,280,933	\$ 6,348,481	\$ 6,794,020	\$ 7,235,656	\$ 7,198,407

Chart 2-A

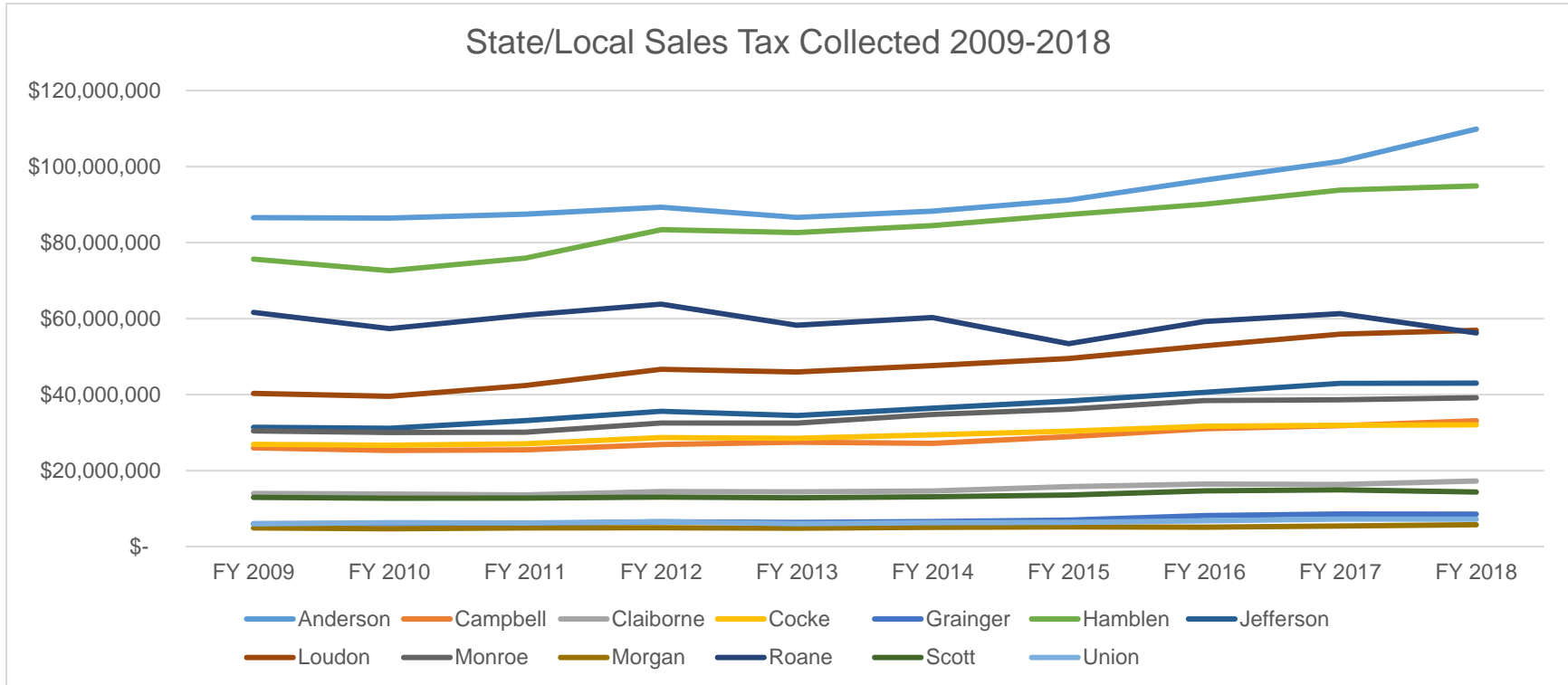
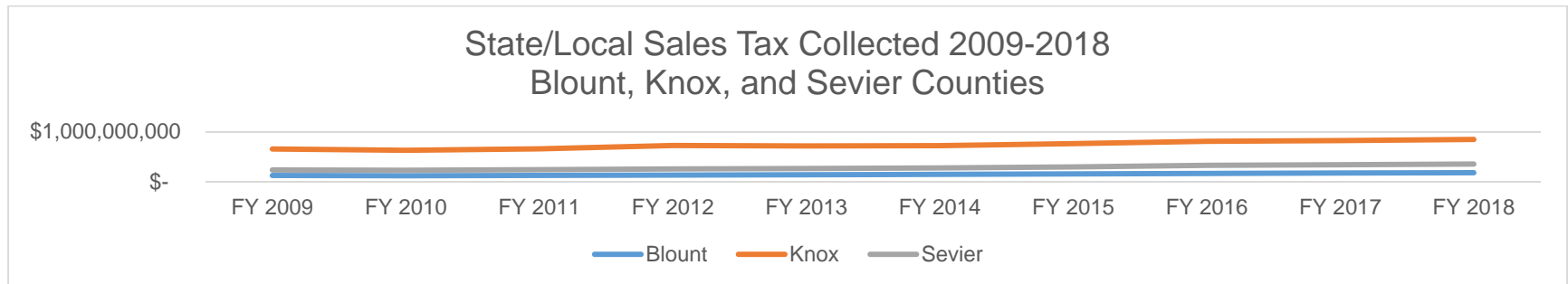


Chart 2-B³



³ Blount, Knox, and Sevier County data is presented in a separate chart to allow for easier viewing of smaller counties' data in Chart 2-A.

Table 2-B
Projected State/Local Sales Tax Collected 2019-2028

County	FY 2019	FY 2020	FY 2021	FY 2022	FY 2023	FY 2024	FY 2025	FY 2026	FY 2027	FY 2028
Anderson	\$112,859,104	\$115,947,863	\$119,121,156	\$122,381,296	\$125,730,661	\$129,171,692	\$132,706,898	\$136,338,857	\$140,070,216	\$143,903,696
Blount	\$190,908,056	\$198,602,117	\$206,606,267	\$214,933,004	\$223,595,329	\$232,606,767	\$241,981,388	\$251,733,829	\$261,879,317	\$272,433,693
Campbell	\$34,014,387	\$34,960,052	\$35,932,008	\$36,930,986	\$37,957,738	\$39,013,036	\$40,097,672	\$41,212,464	\$42,358,249	\$43,535,889
Claiborne	\$17,681,560	\$18,108,782	\$18,546,326	\$18,994,442	\$19,453,386	\$19,923,419	\$20,404,808	\$20,897,829	\$21,402,762	\$21,919,896
Cocke	\$32,679,133	\$33,331,128	\$33,996,132	\$34,674,403	\$35,366,207	\$36,071,814	\$36,791,498	\$37,525,541	\$38,274,229	\$39,037,855
Grainger	\$8,883,850	\$9,249,920	\$9,631,074	\$10,027,933	\$10,441,146	\$10,871,386	\$11,319,354	\$11,785,781	\$12,271,428	\$12,777,086
Hamblen	\$97,359,630	\$99,905,462	\$102,517,865	\$105,198,579	\$107,949,390	\$110,772,132	\$113,668,684	\$116,640,978	\$119,690,994	\$122,820,764
Jefferson	\$44,542,825	\$46,156,285	\$47,828,190	\$49,560,655	\$51,355,874	\$53,216,122	\$55,143,752	\$57,141,206	\$59,211,014	\$61,355,795
Knox	\$869,046,958	\$894,719,715	\$921,150,879	\$948,362,853	\$976,378,704	\$1,005,222,179	\$1,034,917,726	\$1,065,490,519	\$1,096,966,470	\$1,129,372,262
Loudon	\$59,167,106	\$61,520,312	\$63,967,111	\$66,511,224	\$69,156,522	\$71,907,030	\$74,766,931	\$77,740,577	\$80,832,491	\$84,047,378
Monroe	\$40,276,560	\$41,440,081	\$42,637,213	\$43,868,929	\$45,136,228	\$46,440,136	\$47,781,712	\$49,162,043	\$50,582,250	\$52,043,485
Morgan	\$5,842,268	\$5,946,028	\$6,051,631	\$6,159,109	\$6,268,496	\$6,379,826	\$6,493,133	\$6,608,452	\$6,725,820	\$6,845,272
Roane	\$55,800,408	\$55,395,123	\$54,992,781	\$54,593,362	\$54,196,843	\$53,803,205	\$53,412,426	\$53,024,485	\$52,639,361	\$52,257,035
Scott	\$14,534,917	\$14,712,175	\$14,891,595	\$15,073,202	\$15,257,025	\$15,443,089	\$15,631,423	\$15,822,053	\$16,015,008	\$16,210,316
Sevier	\$372,120,769	\$389,455,001	\$407,596,701	\$426,583,482	\$446,454,711	\$467,251,587	\$489,017,229	\$511,796,764	\$535,637,422	\$560,588,631
Union	\$7,354,538	\$7,514,055	\$7,677,033	\$7,843,545	\$8,013,668	\$8,187,482	\$8,365,066	\$8,546,501	\$8,731,872	\$8,921,263

Chart 2-C

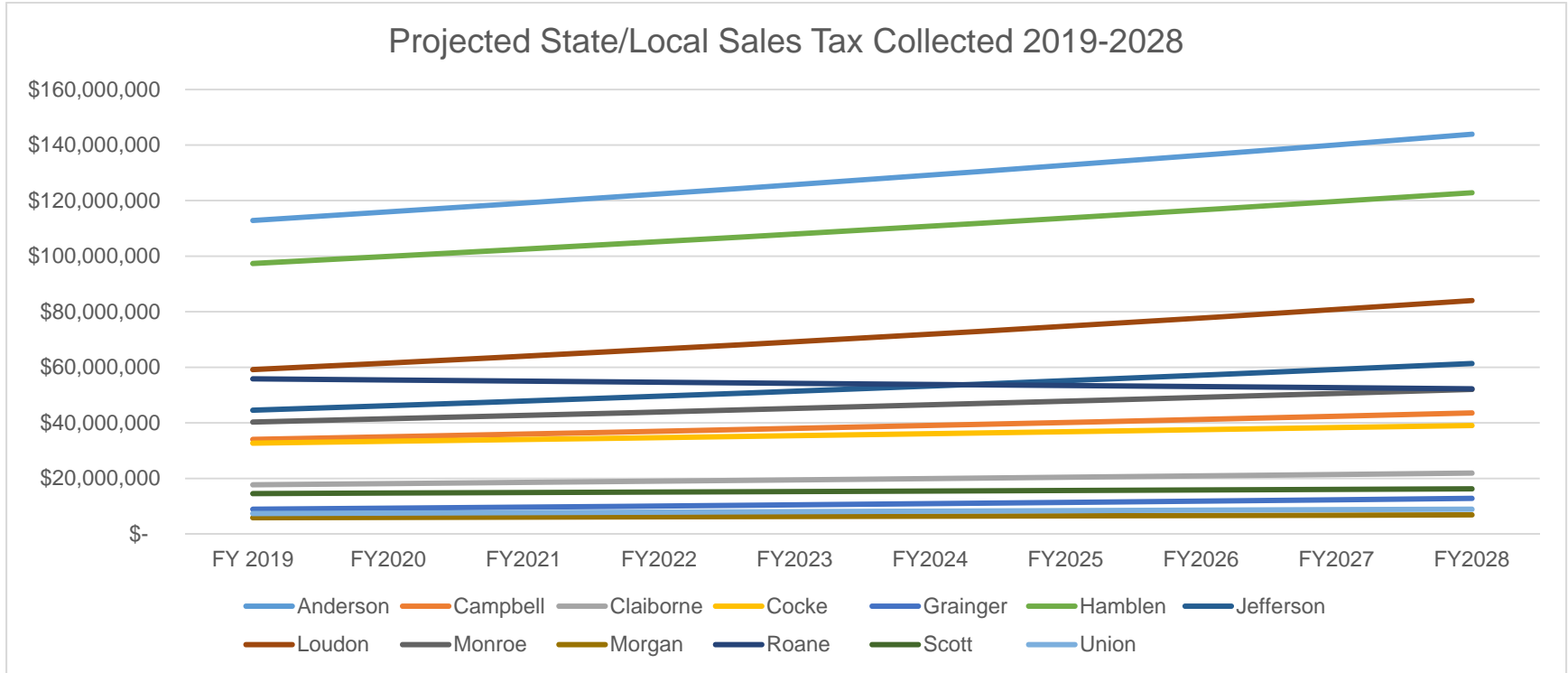
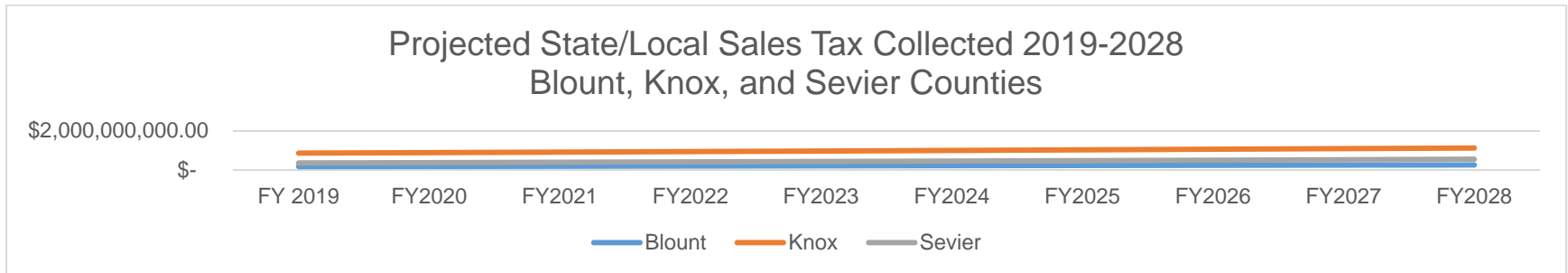


Chart 2-D⁴



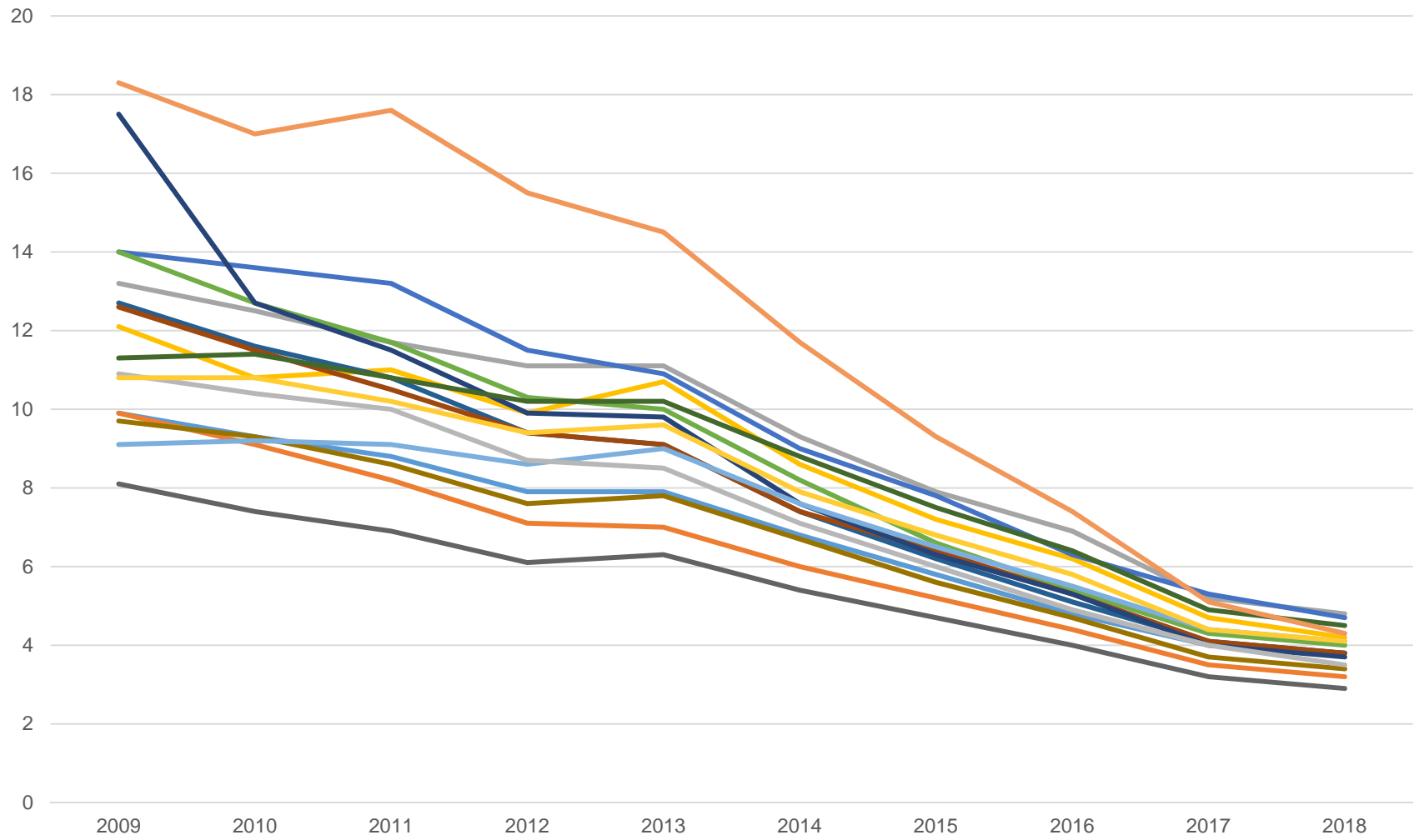
⁴ Blount, Knox, and Sevier County data is presented in a separate chart to allow for easier viewing of smaller counties' data in Chart 2-C.

Table 2-C
Unemployment Rates 2009-2018

County	Year									
	2009	2010	2011	2012	2013	2014	2015	2016	2017	2018
Anderson	9.9	9.3	8.8	7.9	7.9	6.8	5.8	4.8	4	3.8
Blount	9.9	9.1	8.2	7.1	7	6	5.2	4.4	3.5	3.2
Campbell	13.2	12.5	11.7	11.1	11.1	9.3	7.9	6.9	5.2	4.8
Claiborne	12.1	10.8	11	9.9	10.7	8.6	7.2	6.2	4.7	4.2
Cocke	14	13.6	13.2	11.5	10.9	9	7.8	6.3	5.3	4.7
Grainger	14	12.7	11.7	10.3	10	8.2	6.6	5.4	4.3	4.0
Hamblen	12.7	11.6	10.8	9.4	9.1	7.4	6.2	5.1	4.1	3.8
Jefferson	12.6	11.5	10.5	9.4	9.1	7.4	6.4	5.3	4.1	3.8
Knox	8.1	7.4	6.9	6.1	6.3	5.4	4.7	4	3.2	2.9
Loudon	9.7	9.3	8.6	7.6	7.8	6.7	5.6	4.7	3.7	3.4
Monroe	17.5	12.7	11.5	9.9	9.8	7.6	6.3	5.3	4	3.7
Morgan	11.3	11.4	10.8	10.2	10.2	8.8	7.5	6.4	4.9	4.5
Roane	9.1	9.2	9.1	8.6	9	7.6	6.5	5.5	4.4	4.1
Scott	18.3	17	17.6	15.5	14.5	11.7	9.3	7.4	5.1	4.3
Sevier	10.9	10.4	10	8.7	8.5	7.1	6	4.9	4	3.5
Union	10.8	10.8	10.2	9.4	9.6	7.9	6.8	5.8	4.4	4.1

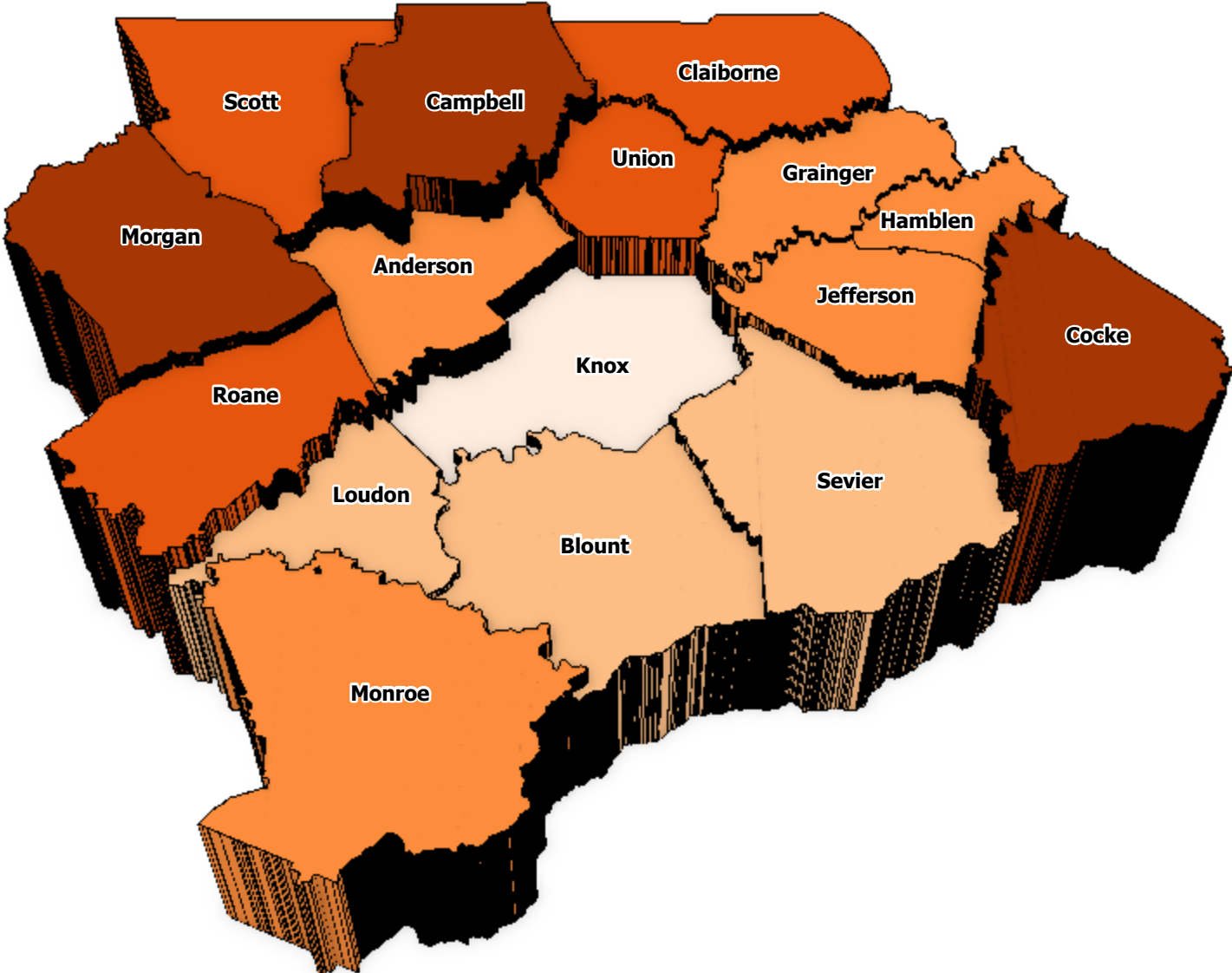
Chart 2-E

Unemployment Rates 2009-2018



- Anderson
- Blount
- Campbell
- Claiborne
- Cocke
- Grainger
- Hamblen
- Jefferson
- Knox
- Loudon
- Monroe
- Morgan
- Roane
- Scott
- Sevier
- Union

2018 Unemployment Rate By Region



Unemployment Rate

- 0-2.94%
- 2.95-3.49%
- 3.5-3.95%
- 3.96-4.3%
- 4.31-4.76%

East Tennessee Development District
October 2019
Credit-US Department of Labor, TNGIS

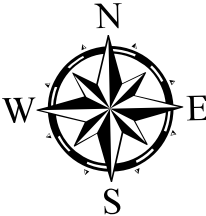


Table 2-D
Unemployment Rates 2019-2022

County	Year			
	2019	2020	2021	2022
Anderson	3.1	2.4	1.7	1.0
Blount	2.5	1.8	1.1	0.4
Campbell	4.1	3.4	2.7	2.0
Claiborne	3.5	2.8	2.1	1.4
Cocke	4.0	3.3	2.6	1.9
Grainger	3.3	2.6	1.9	1.2
Hamblen	3.1	2.4	1.7	1.0
Jefferson	3.1	2.4	1.7	1.0
Knox	2.2	1.5	0.8	0.1
Loudon	2.7	2.0	1.3	0.6
Monroe	3.0	2.3	1.6	0.9
Morgan	3.8	3.1	2.4	1.7
Roane	3.4	2.7	2.0	1.3
Scott	3.6	2.9	2.2	1.5
Sevier	2.8	2.1	1.4	0.7
Union	3.4	2.7	2.0	1.3

Chart 2-F

Projected Unemployment Rates 2019-2022

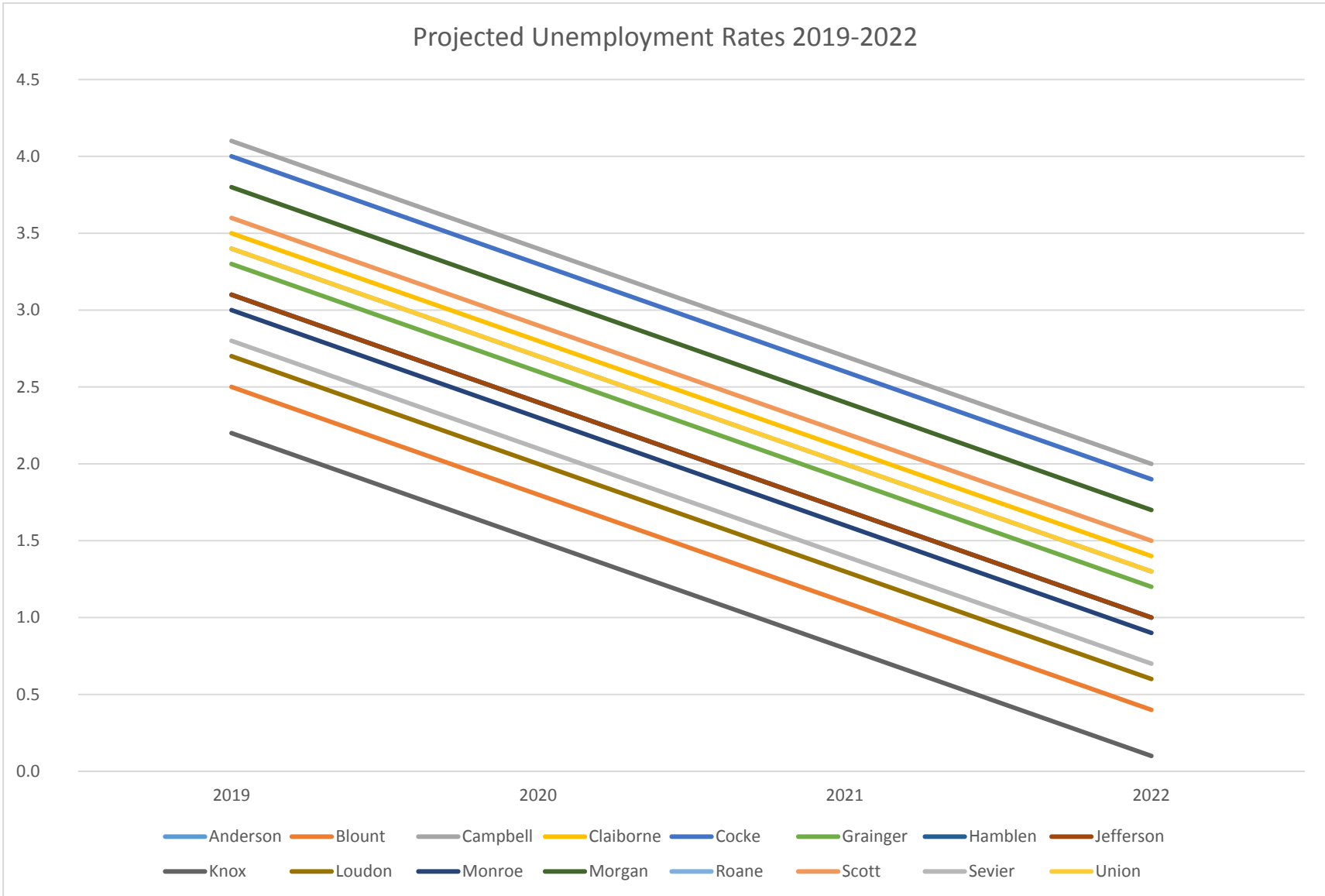


Table 2-E
Per Capita Personal Income 2008-2024

County	Year with projection by U.S. Bureau of Economic Analysis										Year with projection by ETDD						
	2008	2009	2010	2011	2012	2013	2014	2015	2016	2017	2018	2019	2020	2021	2022	2023	2024
Anderson	35,568	34,761	36,005	38,201	39,245	39,047	40,361	38,686	39,883	40,847	41,434	42,020	42,607	43,193	43,780	44,366	44,953
Blount	32,397	31,793	32,760	34,319	35,882	36,023	37,085	38,887	40,086	41,224	42,205	43,186	44,166	45,147	46,128	47,109	48,089
Campbell	26,208	26,216	27,213	28,154	29,090	29,634	30,473	31,746	32,133	33,042	33,801	34,561	35,320	36,079	36,839	37,598	38,357
Claiborne	26,612	26,215	26,919	28,062	29,158	29,206	29,879	32,777	33,517	34,635	35,526	36,418	37,309	38,201	39,092	39,984	40,875
Cocke	23,861	24,194	25,057	26,169	26,670	27,490	28,236	29,768	30,436	31,362	32,195	33,029	33,862	34,696	35,529	36,363	37,196
Grainger	24,529	24,609	25,382	26,411	27,684	28,085	29,011	30,467	30,840	32,317	33,182	34,048	34,913	35,778	36,644	37,509	38,374
Hamblen	28,138	28,202	28,960	31,207	30,941	31,356	32,328	35,036	35,375	36,017	36,892	37,768	38,643	39,519	40,394	41,270	42,145
Jefferson	27,416	27,578	27,900	28,768	29,455	29,814	30,715	32,663	33,397	34,362	35,134	35,906	36,677	37,449	38,221	38,993	39,764
Knox	37,811	36,460	37,673	40,142	42,290	41,752	43,012	45,744	46,577	48,160	49,310	50,460	51,610	52,760	53,909	55,059	56,209
Loudon	35,756	35,097	35,363	37,800	38,898	38,870	40,084	43,736	45,159	46,183	47,342	48,500	49,659	50,817	51,976	53,134	54,293
Monroe	25,855	25,012	25,993	27,053	27,993	28,386	29,449	30,601	31,521	32,283	32,997	33,711	34,426	35,140	35,854	36,568	37,283
Morgan	23,576	23,725	24,425	25,330	26,364	26,765	27,205	27,747	27,894	28,699	29,268	29,837	30,407	30,976	31,545	32,114	32,684
Roane	30,850	30,724	32,189	33,471	34,255	34,331	35,390	37,451	38,555	39,763	40,753	41,744	42,734	43,724	44,715	45,705	46,695
Scott	23,468	23,476	23,810	24,379	24,810	25,657	26,374	27,853	27,877	28,721	29,305	29,888	30,472	31,056	31,639	32,223	32,807
Sevier	29,344	28,616	28,858	30,061	31,236	31,532	32,350	36,061	37,074	38,114	39,088	40,063	41,037	42,012	42,986	43,961	44,935
Union	22,404	22,441	23,325	24,043	25,128	25,515	26,104	28,896	29,994	30,686	31,606	32,526	33,447	34,367	35,287	36,207	37,128

Chart 2-G

Per Capita Personal Income 2008-2017

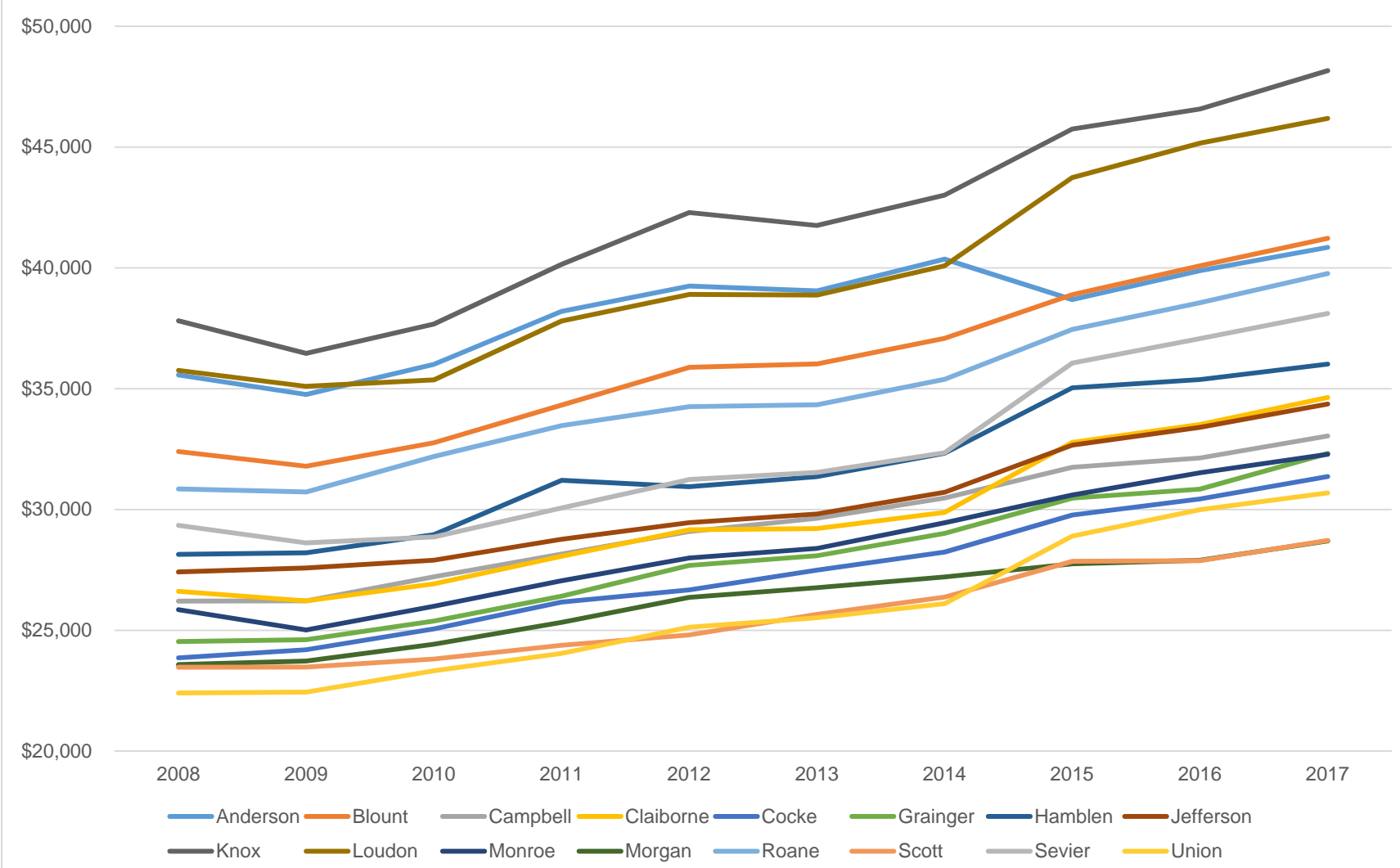


Chart 2-H

Projected Per Capita Personal Income 2018-2024

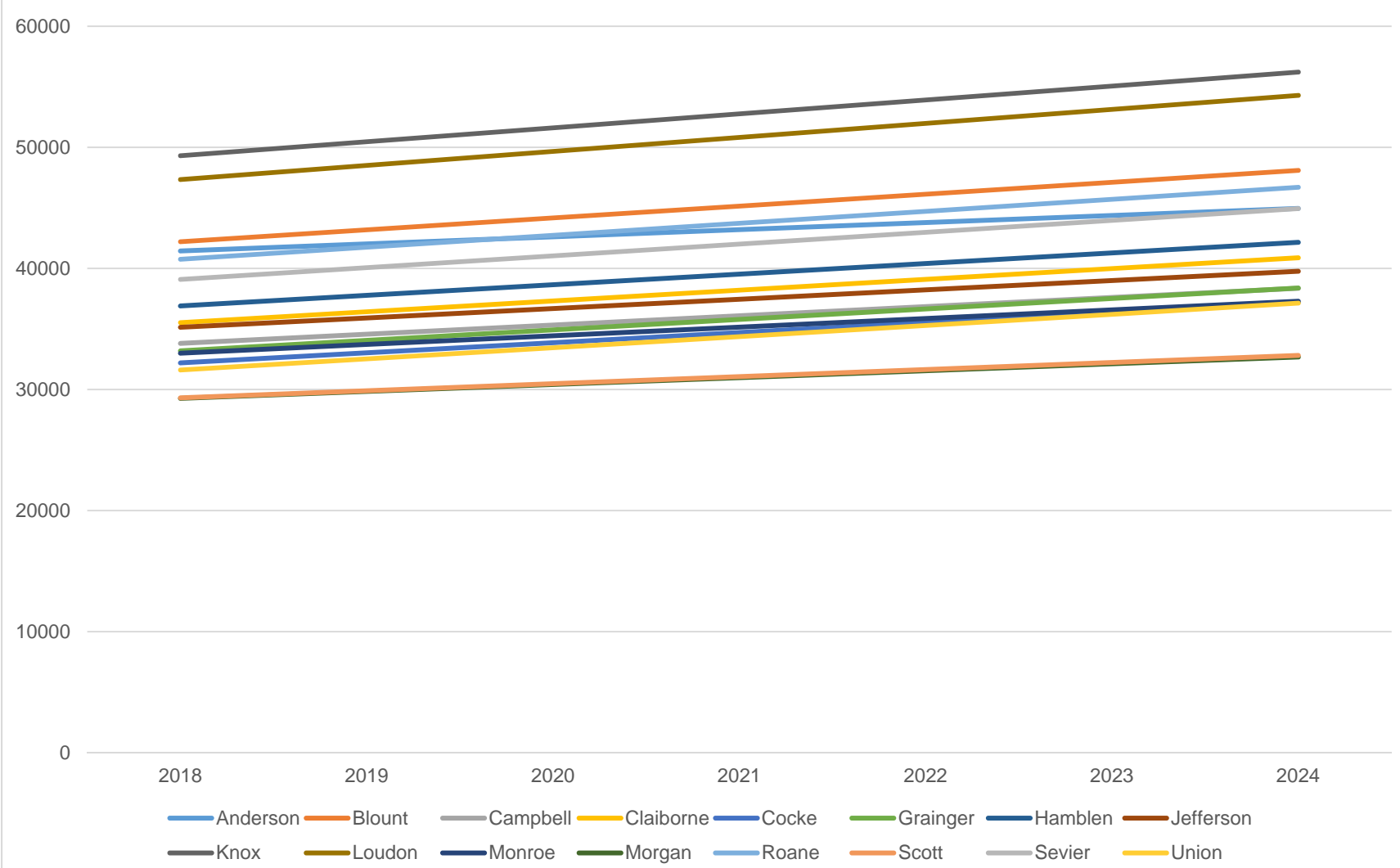


Table 2-F
Number of Housing Units 2010-2018

County	Year								
	2010	2011	2012	2013	2014	2015	2016	2017	2018
Anderson	34,710	34,774	34,762	34,756	34,781	34,869	34,909	34,956	35,022
Blount	55,340	55,468	55,582	55,838	56,128	56,646	57,195	57,857	58,673
Campbell	20,012	20,118	20,224	20,330	20,459	20,590	20,759	20,948	21,172
Claiborne	14,885	14,974	15,048	15,084	15,149	15,258	15,336	15,427	15,540
Cocke	17,460	17,475	17,493	17,506	17,522	17,538	17,561	17,596	17,629
Grainger	10,901	10,914	10,925	10,936	10,973	11,011	11,044	11,081	11,130
Hamblen	26,967	27,002	27,017	27,061	27,069	27,076	27,111	27,159	27,251
Jefferson	23,568	23,664	23,718	23,774	23,870	23,946	24,041	24,170	24,301
Knox	195,228	196,482	196,901	197,856	198,999	200,526	201,888	203,626	206,043
Loudon	21,753	21,959	22,074	22,180	22,340	22,515	22,759	23,038	23,371
Monroe	20,801	20,888	20,924	20,966	21,027	21,087	21,145	21,216	21,311
Morgan	8,922	8,933	8,945	8,954	8,965	8,974	8,987	9,005	9,023
Roane	25,739	25,720	25,747	25,725	25,697	25,667	25,644	25,618	25,600
Scott	9,920	9,928	9,941	9,950	9,959	9,970	9,985	10,005	10,025
Sevier	55,905	56,069	56,309	56,506	56,567	56,775	57,064	57,503	58,281
Union	8,974	9,042	9,082	9,143	9,187	9,232	9,294	9,371	9,471

Chart 2-I

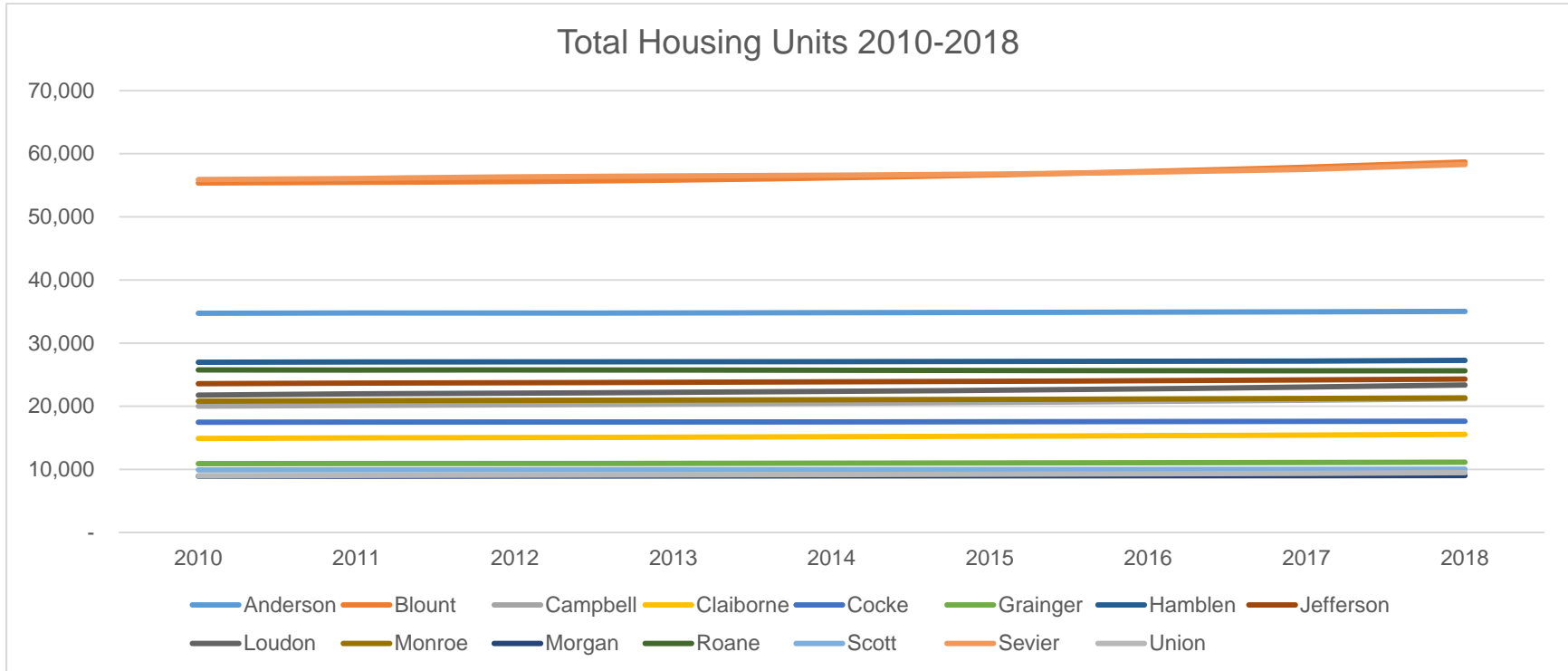
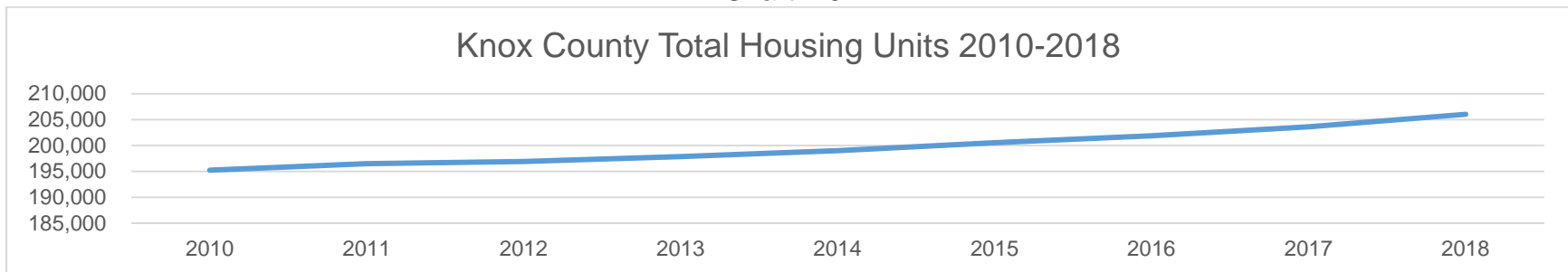


Chart 2-J⁵



⁵ Knox County data is presented in a separate chart to allow for easier viewing of smaller counties' data in Chart 2-I.

Table 2-G
Projected Number of Housing Units 2019-2029

County	Year										
	2019	2020	2021	2022	2023	2024	2025	2026	2027	2028	2029
Anderson	35,337	35,655	35,976	36,300	36,627	36,956	37,289	37,624	37,963	38,305	38,649
Blount	62,193	65,925	69,880	74,073	78,518	83,229	88,222	93,516	99,127	105,074	111,379
Campbell	22,442	23,789	25,216	26,729	28,333	30,033	31,835	33,745	35,770	37,916	40,191
Claiborne	16,224	16,938	17,683	18,461	19,273	20,121	21,007	21,931	22,896	23,903	24,955
Cocke	17,805	17,983	18,163	18,345	18,528	18,714	18,901	19,090	19,281	19,473	19,668
Grainger	11,353	11,580	11,811	12,047	12,288	12,534	12,785	13,041	13,301	13,567	13,839
Hamblen	27,524	27,799	28,077	28,357	28,641	28,927	29,217	29,509	29,804	30,102	30,403
Jefferson	25,030	25,781	26,554	27,351	28,172	29,017	29,887	30,784	31,707	32,659	33,638
Knox	218,406	231,510	245,401	260,125	275,732	292,276	309,812	328,401	348,105	368,992	391,131
Loudon	25,007	26,757	28,630	30,635	32,779	35,074	37,529	40,156	42,967	45,974	49,192
Monroe	21,737	22,172	22,615	23,068	23,529	24,000	24,480	24,969	25,469	25,978	26,498
Morgan	9,113	9,204	9,296	9,389	9,483	9,578	9,674	9,771	9,868	9,967	10,067
Roane	25,472	25,345	25,218	25,092	24,966	24,842	24,717	24,594	24,471	24,348	24,227
Scott	10,125	10,227	10,329	10,432	10,536	10,642	10,748	10,856	10,964	11,074	11,185
Sevier	60,612	63,037	65,558	68,181	70,908	73,744	76,694	79,762	82,952	86,270	89,721
Union	10,039	10,642	11,280	11,957	12,674	13,435	14,241	15,095	16,001	16,961	17,979

Chart 2-K

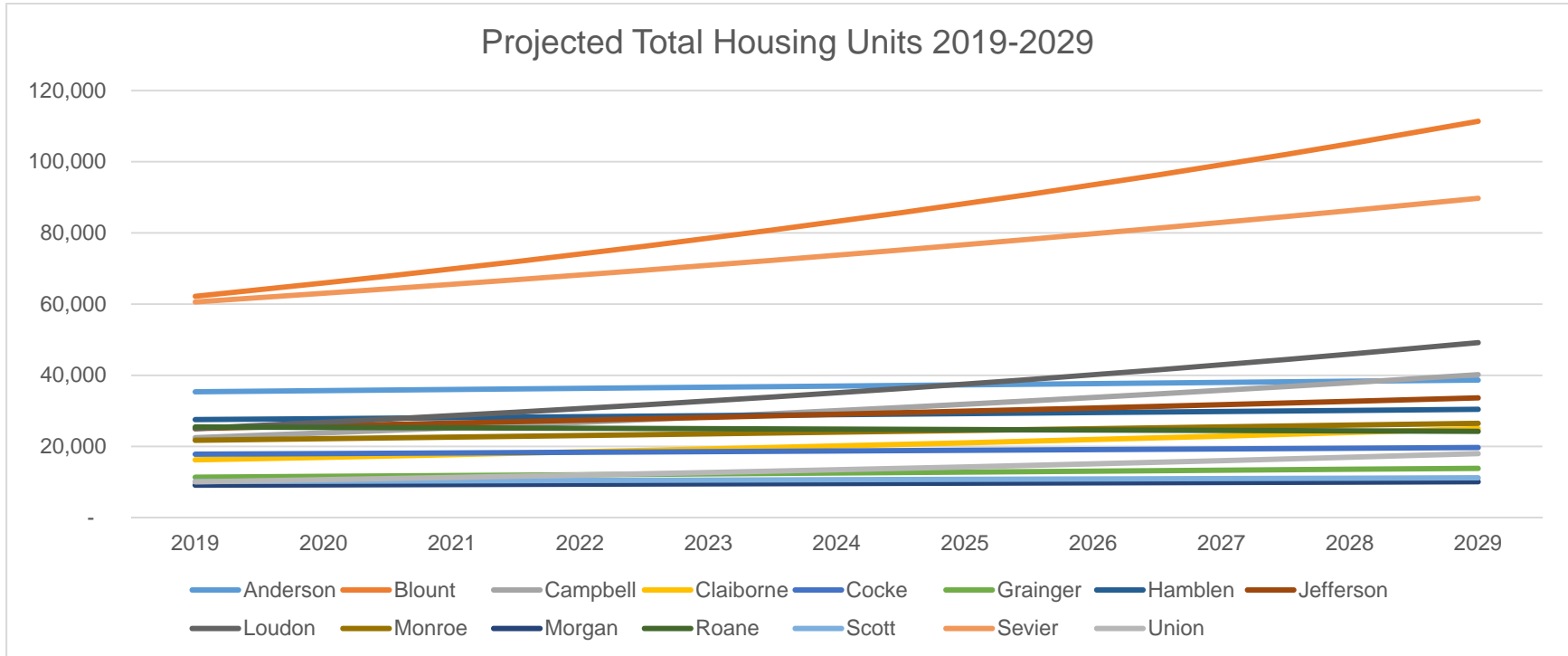
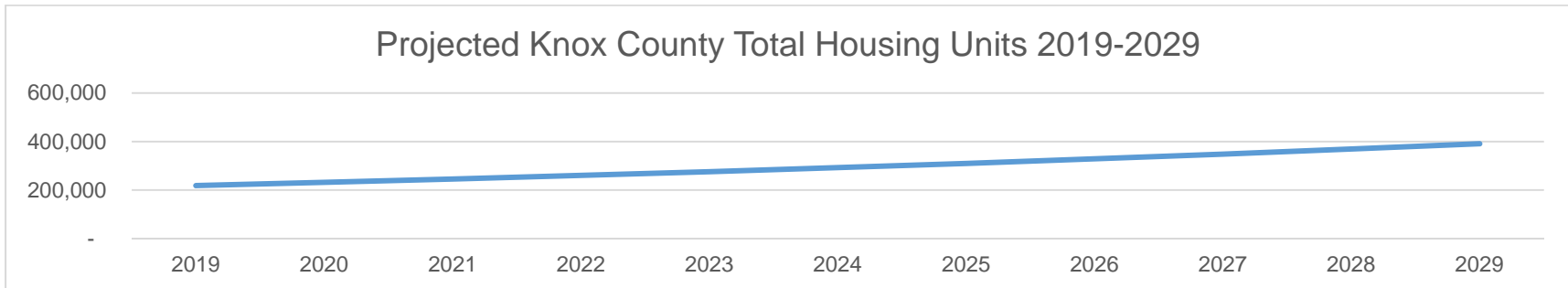


Chart 2-L⁶



⁶ Knox County data is presented in a separate chart to allow for easier viewing of smaller counties' data in Chart 2-L.